



DETAILERS PARADISE
Car Care Institute

Polisher Pads: Types & Uses



Paradise Yellow Cutting Pad Paradise Orange Light Cutting Pad Paradise White Polishing Pad Paradise Black Finishing Pad



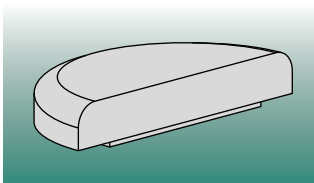
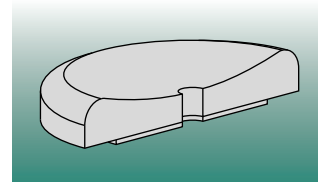
Which Paradise Pad is right for you?

	Paradise Yellow Cutting Pad	Paradise Orange Light Cutting Pad	Paradise White Polishing Pad	Paradise Black Finishing Pad
Prima				
Cut	<input type="radio"/>			
Swirl		<input type="radio"/>	<input type="radio"/>	
Finish		<input type="radio"/>	<input type="radio"/>	
Amigo	<input type="radio"/>	<input type="radio"/>	<input type="radio"/>	<input type="radio"/>
Epic				<input type="radio"/>
Four Star				
Ultimate Swirl Mark Remover		<input type="radio"/>	<input type="radio"/>	
Ultimate Pre-Wax Cleanser ¹		<input type="radio"/>	<input type="radio"/>	
Ultimate Paint Protection (UPP)				<input type="radio"/>
Klasse				
All-In-One (AIO) ^{1,2}	<input type="radio"/>	<input type="radio"/>	<input type="radio"/>	<input type="radio"/>
Sealant Glaze (SG) ²				<input type="radio"/>
P21S[®]				
Gloss-enhancing Paintwork Cleanser (GEPC) ¹	<input type="radio"/>	<input type="radio"/>	<input type="radio"/>	<input type="radio"/>

¹ Aggressive pads are used to agitate paint; product is abrasive-free.
² Pad should be slightly damp when used with this product.

Types of Foam Pads:

The variable contact (VC) pads provide focused pressure around the edges of the pad. They concentrate the polish within a smaller surface area. Theoretically, one would never really use the very center of a VC pad. Because of this focused pressure, this type of pad is ideal for cutting. However, the user must be aware that this focus can cause the PC to stop spinning if there is too much additional pressure applied to the PC.



The flat pad gives you even pressure throughout. It takes less pressure to stop the spinning of the PC, resulting in a more even finish. This style pad is best for light polishing and cleaning work; however, the VC style pad does a better job at cutting.

The curved edge pads are great for working in tight spaces of a surface with lots of waves and narrow strips-such as the "A" pillar. The polish is applied to the outer edge of the pad and the PC is used at more of an angle. With this method, you are halfway between a flat and VC pad with surface contact. This pad can also be used flat. In this case, you would apply more polish on the peak between the curve and recess. This technique would be similar to a VC pad.

